



THE PLANS

ACCOMMODATION

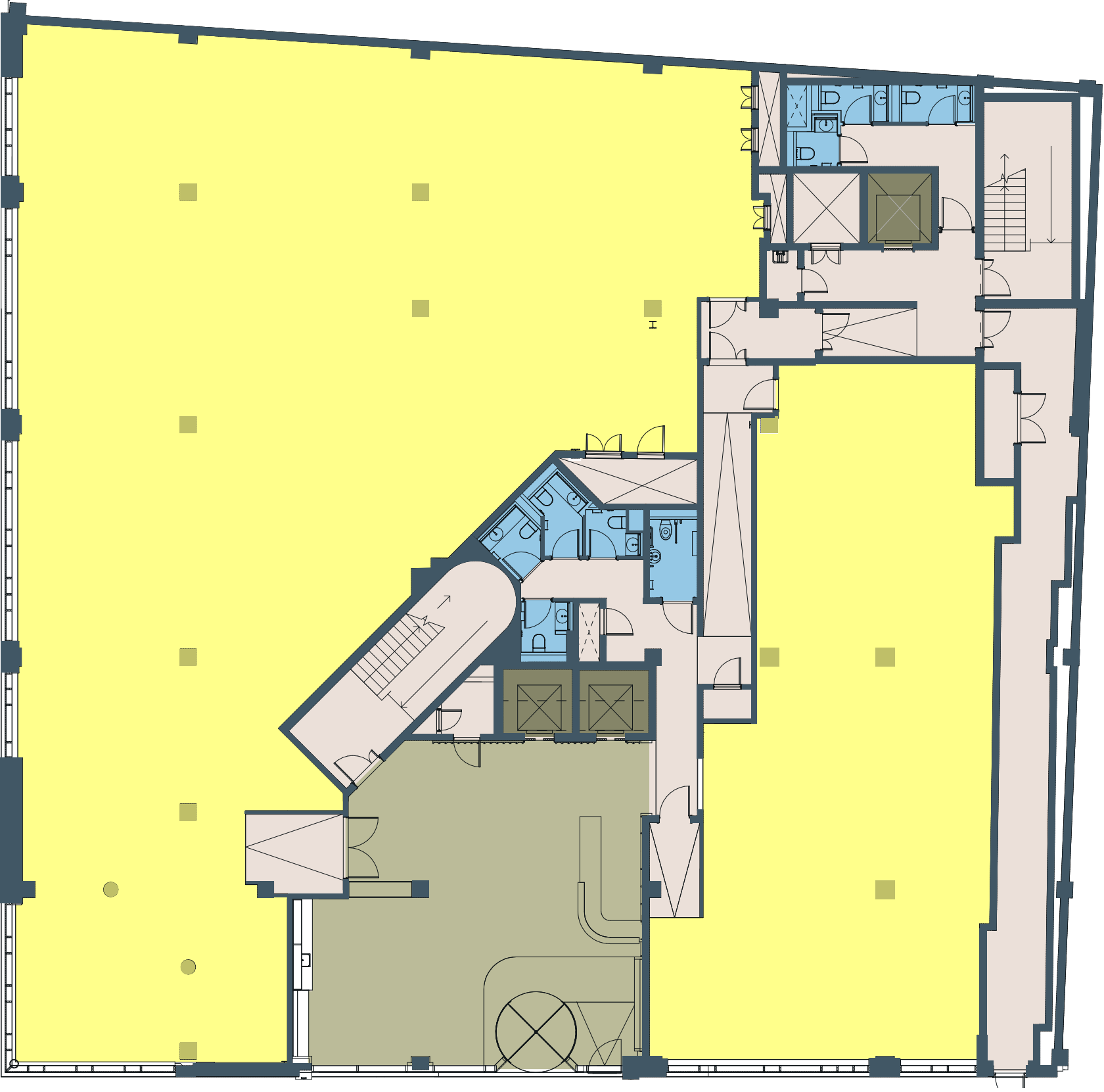
FLOOR	SQ FT	SQ M	
SIXTH Sky Lounge Terrace	624 980	58.0 91.0	
FIFTH	8,315	772.5	
FOURTH	9,514	883.9	
THIRD	9,593	891.2	
SECOND	9,593	891.2	
FIRST	9,559	888.1	
GROUND	7,048	654.8	
BASEMENT	Including 19 car spaces & 6 EV chargers		
TOTAL	53,622	4,981.7	

BASEMENT



GROUND FLOOR

7,048 SQ FT / 654.8 SQ M



●	●	●	●	●	●
CYCLE STORAGE	TOILETS	OFFICE	RECEPTION	CORE	LIFT

TYPICAL UPPER FLOOR

9,559 SQ FT / 888.1 SQ M



SIXTH FLOOR

SKY LOUNGE: 624 SQ FT / 58.0 SQ M

TERRACE: 980 SQ FT / 91.0 SQ M

